

Stuart Square

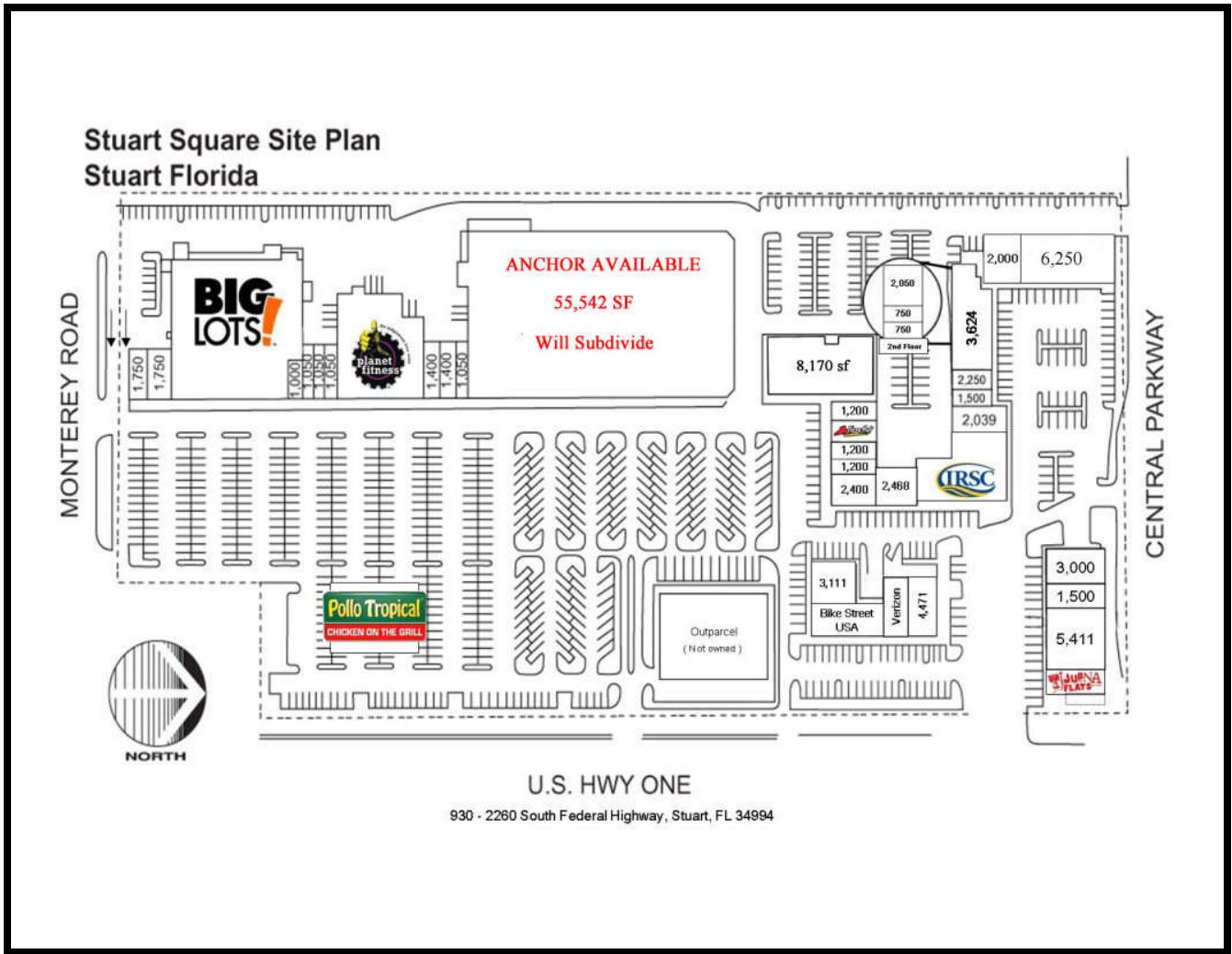
930 – 2260 South Federal Highway
Stuart, Florida 34994



- Located at the Prime Intersection of U.S. Highway 1 and Monterey Road
- 178,090 Square Foot Neighborhood Shopping Center
- Anchored by Big Lots and Planet Fitness
- **Anchor Space Available – 55,542 SF (Will Divide)**



4280 Professional Center Drive, Suite 100 • Palm Beach Gardens • Florida 33410
(561) 966-0070 Phone • (561) 966-0260 Fax
www.nobleproperties.com



DEMOGRAPHICS:

	<u>3 Mile</u>	<u>5 Mile</u>
Estimated 2019 Population	46,724	96,997
Projected 2024 Population	48,914	101,907
Estimated 2019 Households	21,467	43,315
Projected 2024 Households	22,473	45,481
2019 Average Household Income	\$83,594	\$92,467
2019 Median Age	51.7	52.3

FOR LEASING INFORMATION:

Gulfstream Commercial Realty

9816 S. Military Trail, Suite C2-3
Boynton Beach, Florida 33436

Bobby Albino

561-239-5775

balbino@wrepllc.com

